

The Berridge

BByline

SEPTEMBER 2023



**A Commitment to
Quality and Community**

A Berridge Manufacturing Company Publication



Bighorn Metalworks, Inc.

A COMMITMENT TO QUALITY AND COMMUNITY

Bighorn Metalworks, Inc. has been refining the art of architectural sheet metal since 1998. Their quality workmanship and unique projects have made a name for themselves. Bighorn Metalworks has become a leader in the industry, and their work can be found throughout Colorado and the Midwest.

After many years in the roofing and architectural sheet metal business, Bighorn Metalworks, Inc. was founded by Chuck Spicer and Jeff Kletzmayer. Leadership has since been handed over to John Nolan, who has been with the company for 14 years; Francisco Villagrana, who's been with the company for 17 years; and Jeff's son, Kacey Kletzmayer, has been with the company nearly his entire life.

While commercial sheet metal and metal roofing make up most of their work, Bighorn Metalworks also does residential work and seamless rain gutters. No project is too small or complex for Bighorn Metalworks. Whether it is a small residential roof, standing seam panels on a wall, or custom fabricating metal wall panels, the talented team at Bighorn Metalworks has the experience to do the job.

Bighorn Metalworks purchased their Berridge SS-14 Tee-Panel Roll Former more than 25 years ago and have taken advantage of the incentives of being a Berridge Licensee ever since.

"We mainly bid Berridge for most of our projects," says John Nolan. "We always price out what they have specified, then suggest Berridge for a value engineering option when asked by the GC for alternative pricing options."

Berridge Licensees receive discounts on coil, flat sheets, fabricated products, accessories, and total



Pictured Above, Left to Right: Kacey Kletzmayer, Jeff Kletzmayer, Francisco Villagrana, and John Nolan

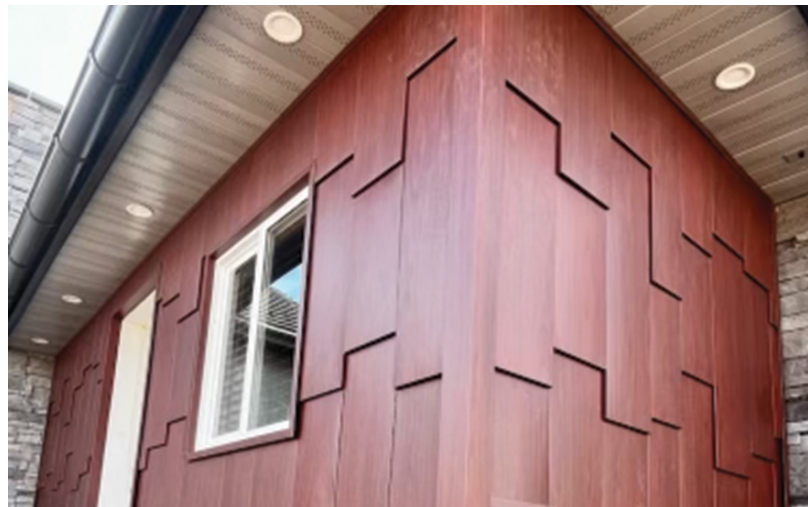
Fiddler's Green Box Office using Berridge BR-12 Panel in Medium Bronze

technical support on Watertightness Warranty projects and pre-qualified sales leads.

Bighorn Metalworks has perfected their craft and put their years of experience to use in improving and helping their community. Recently, they helped to complete the construction of the Venture Academy of Leadership and Entrepreneurship in Parker, CO. Berridge donated the materials for the perimeter fence, and Bighorn Metalworks installed it at a discount to ensure the project was finished on time and within budget.



“When we do charity work [in the area], our first call is to Bighorn. Not only are they up to the challenge, but we can always count on their attention to detail and quality craftsmanship.”
-- David Bessey
Berridge Regional Sales Manager



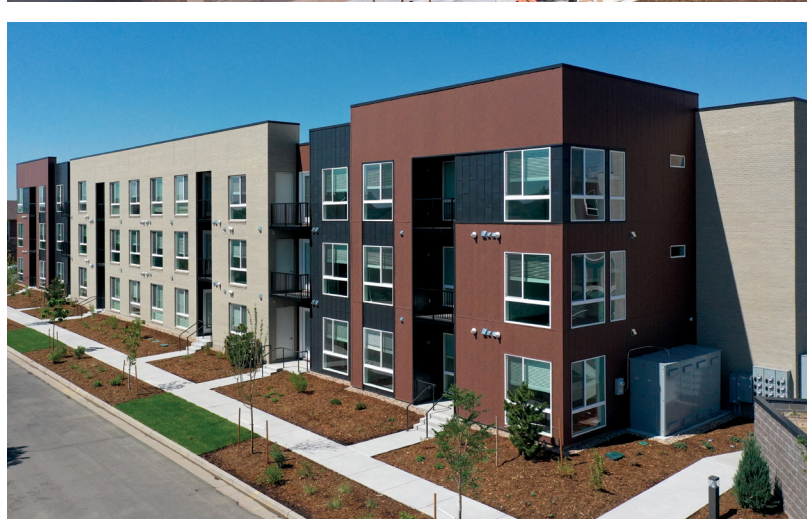
Bighorn Metalworks donates their time and money to local nonprofit organizations benefiting kids and Veterans. They help yearly with the JHL Constructors Kids Classic Golf Tournament, which benefits the National Sports Center for the Disabled, and the Lou Jahde Memorial Car Show, which raises money for Hope Kids. They even have a car to enter in the next show. They work with Project Healing Waters Fly Fishing, Inc., dedicated to physically and emotionally rehabilitating disabled active military and disabled veterans through fly fishing and other educational outings. Bighorn Metalworks also donates prizes every year for the Iverson Memorial Hospital Sportsman Raffle to raise funds for patient care.



For 25 years, Bighorn Metalworks has stood out as a leader in the metal construction industry. Management may have changed, but Bighorn Metalworks' commitment to quality and community remains the same.

Pictured Right, Top to Bottom: Private Residence using Berridge Zee-Lock Panel in Matte Black; Custom fabricated metal wall panels using Berridge Boston Cherry Woodgrain Print Pattern; Venture Academy of Leadership and Entrepreneurship using Berridge Vee-Panel in Terra-Cotta; Dillion Amphitheater using Berridge Zee-Lock Panel in Matte Black





Pictured Left to Right: Central Park Urban Living 3 using Berridge FW-12 Panel, Vee-Panel, and S-Deck in Black Matte, Dark Bronze, and Honey Walnut; Acoya Cherry Creek using Berridge HS-8 Panel in Terra-Cotta, Zinc-Grey, and Charcoal Grey; Erie Police Station using Berridge Zee-Lock Panel in Charcoal Grey; Aurora Highlands P-8 School using Berridge HR-16 Panel and FW-12 Panel in Antique Copper Cote and Charcoal Grey; Chappelow Arts Magnet School using Berridge FW-12 Panel in Dark Bronze; Central Park Urban Living using Berridge L-Panel in COR-TEN AZP® Raw

Pictured on Cover: Fiddler's Green Box Office using Berridge BR-12 Panel in Medium Bronze

BERRIDGE
MANUFACTURING COMPANY
(800) 669-0009 | WWW.BERRIDGE.COM

CORPORATE HEADQUARTERS
2610 Harry Wurzbach Road
San Antonio, TX 79209
(210) 650-3050